



IPULS

INSTITUTET FÖR
PROFESSIONELL UTVECKLING
AV LÄKARE I SVERIGE

**Institute for the Professional Development
of Physicians in Sweden**

Hans Hjelmqvist

Swedish Medical Association

IPULS

- **Sweden**
- **CPD is voluntary**
- **CME is not in use**
 - **Except: International meetings and courses**
- **All Swedish courses should be evaluated**
 - **IPULS**

IPULS



Institute for the Professional Development of Physicians in Sweden

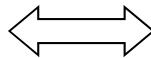
- **Established 2002**
- **Support the continuing professional development and postgraduate education of physicians in Sweden**
- **Owned by three pivotal organisations in Swedish healthcare**
 - **The Swedish Society of Medicine**
 - **The Swedish Medical Association**
 - **The Swedish Association of Local Authorities and Regions**

IPULS

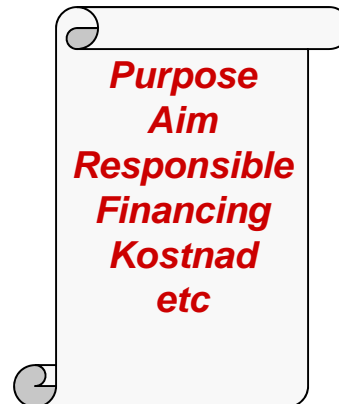
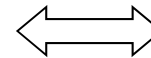
Head of
Department



Physician



www.ipuls.se



County

Pharmaceutical Industry

Medical Specialty

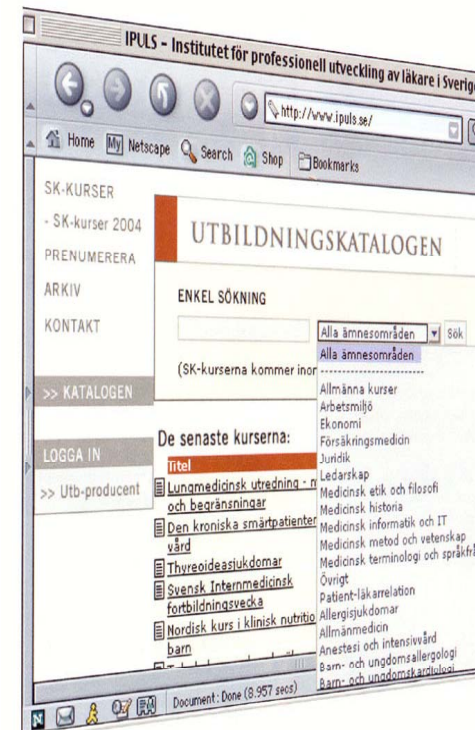
Fakulty

Authority

Other Companies

IPULS

- **Online educational catalogue**
 - easily searchable
- **Offers the physician a convenient way of finding educational courses.**
- **Efficient tool for long-term planning.**
- **The catalogue is continuously updated with IPULS-approved courses**



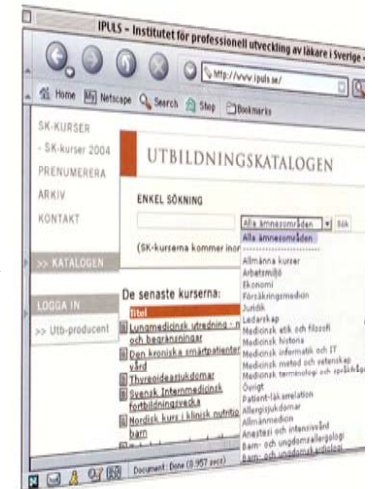
IPULS

1. Course provider

2. IPULS on line

3. IPULS internal evaluation

4. IPULS external evaluation



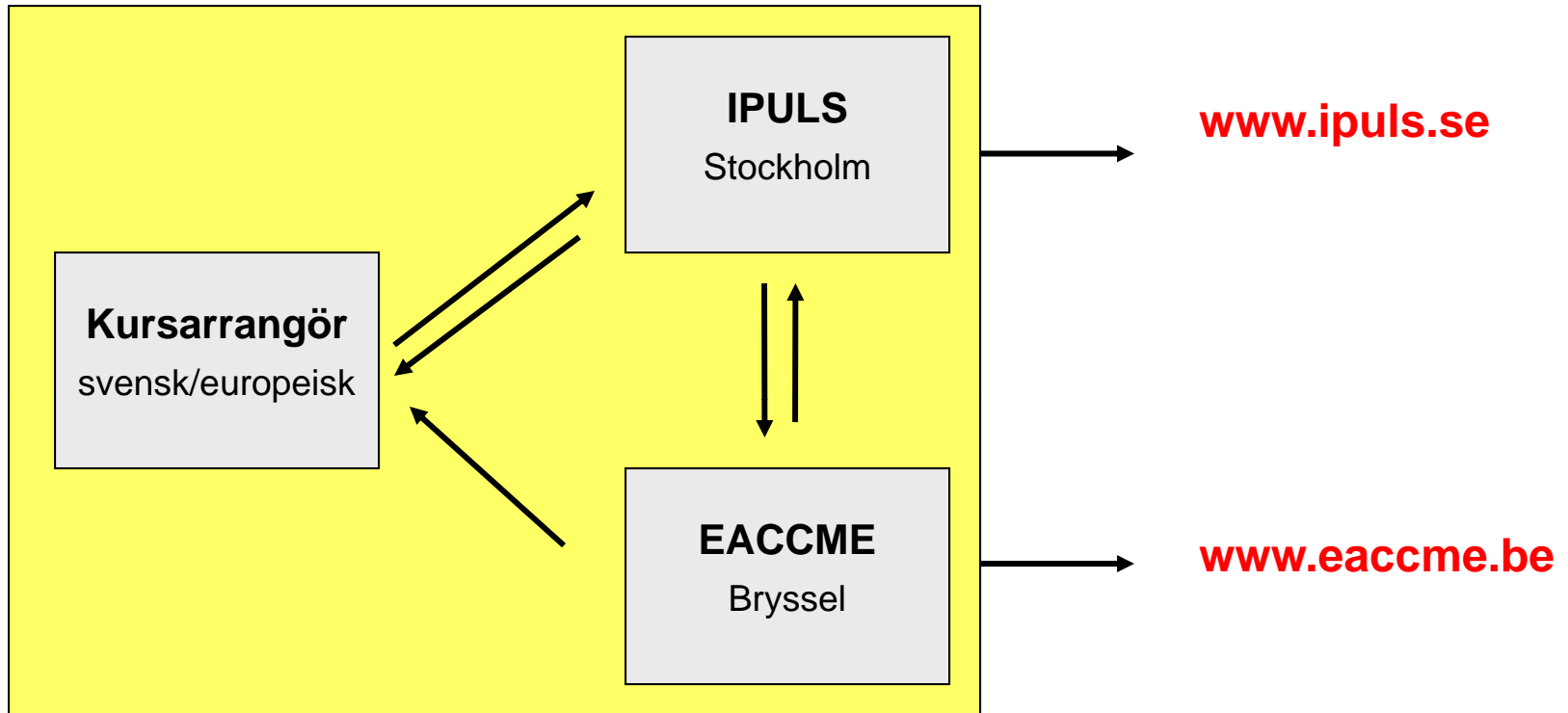
IPULS

- **The review process**
- **All courses described by the producer**
 - **Common standards**
 - Purpose
 - Specification of target group
 - Specific goals for the participants
 - Learning methods
 - Financing
 - **Description of the course reviewed**
 - Internally at IPULS office
 - Externally by specialists
- **The entire review process takes 2-3 weeks**

IPULS - CME

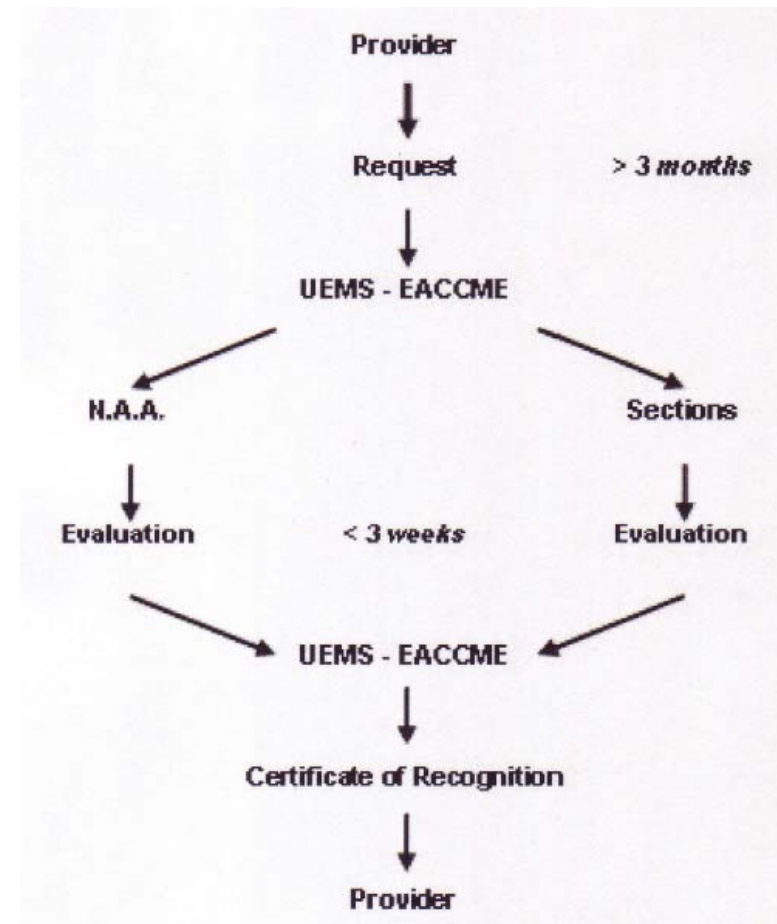
- **We do not use CME in Sweden**
 - **Except: International meetings and courses**
- **Doctors from other countries must be able to**
 - **Get their CME points**
 - **Harmonized**
- **The Swedish Medical Association**
 - **Contract with IPULS**
- **Participate in the UEMS EACCME system**

Evaluation International Courses – "the wrong way"



IPULS - CME

- EACCME online application
- Evaluation by UEMS Sections
- N.A.A. = IPULS
- Evaluation
 - Common standards
 - Purpose
 - Specification of target group
 - Specific goals for the participants
 - Learning methods
- Suggest CME points
- EACCME web site



IPULS - CME

- **In conclusion**
- **IPULS**
 - **Evaluate all Swedish courses**
 - **Evaluate CME: International meetings and courses**
 - **UEMS EACCME system**
 - **Works very well**
- **Thank You**